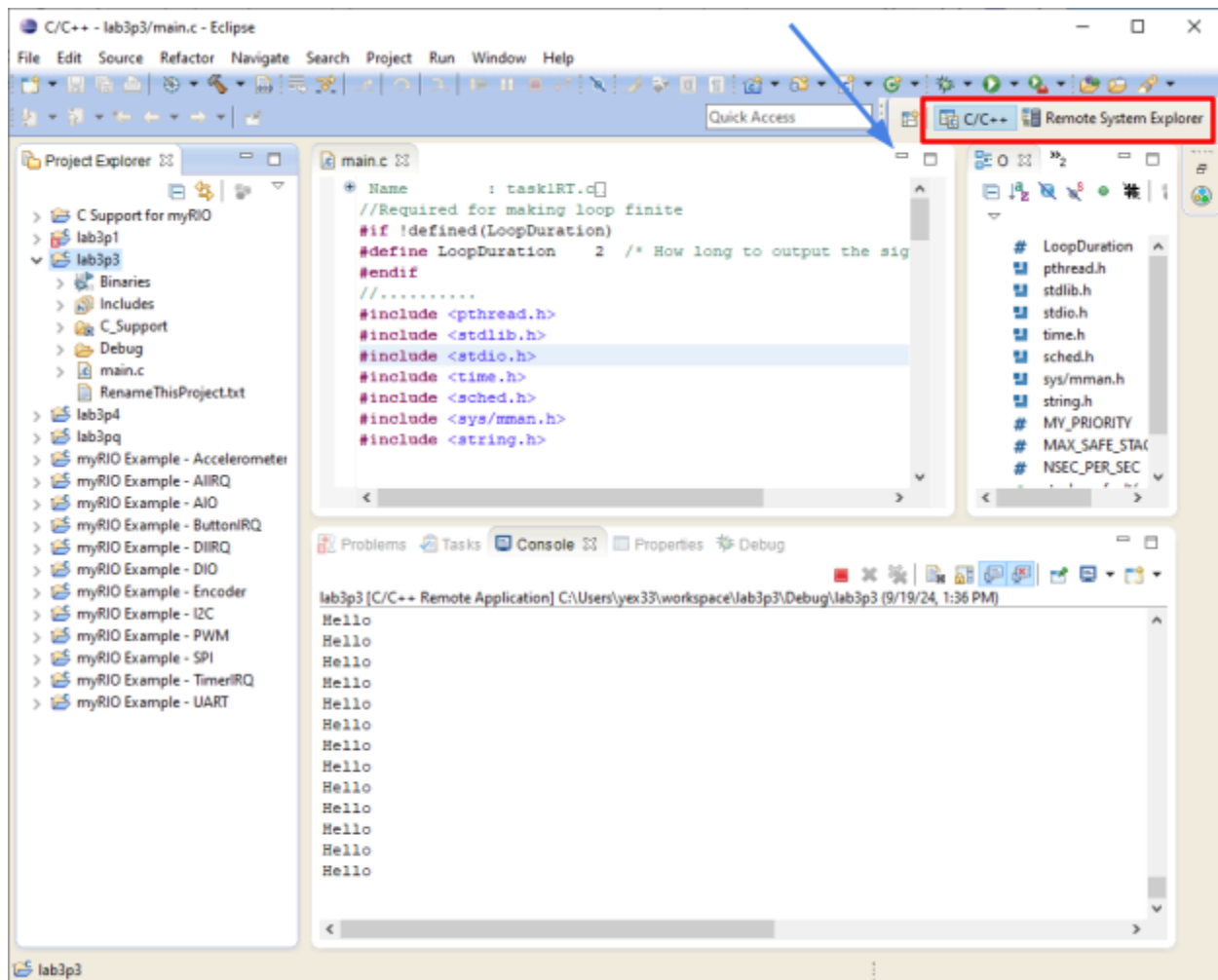


Opening/Switching “Perspectives”

Relevant Context: Part 1–Step 3–first bullet point

Eclipse uses the concept of “Perspectives”, which are essentially collections of UI elements tailored for specific tasks. For example, switching to the “C/C++ Perspective” opens tools like “Project Explorer”, “Console”, and others relevant to C/C++ development.

- You can switch between different “Perspectives” by clicking on the name of that “Perspective” generally located in the **red box** area.
- After you’ve done the first bullet point in Part 1–Step 3, it is possible that you are indeed in a “C/C++ Perspective” but you **cannot see** windows like “**Project Explorer**”, “**Console**”. In this case, simply **minimize the Eclipse welcome page** by clicking on a dash button located at the top right corner of the page window similar to one pointed by the **blue arrow**.



Import Extra Project Template

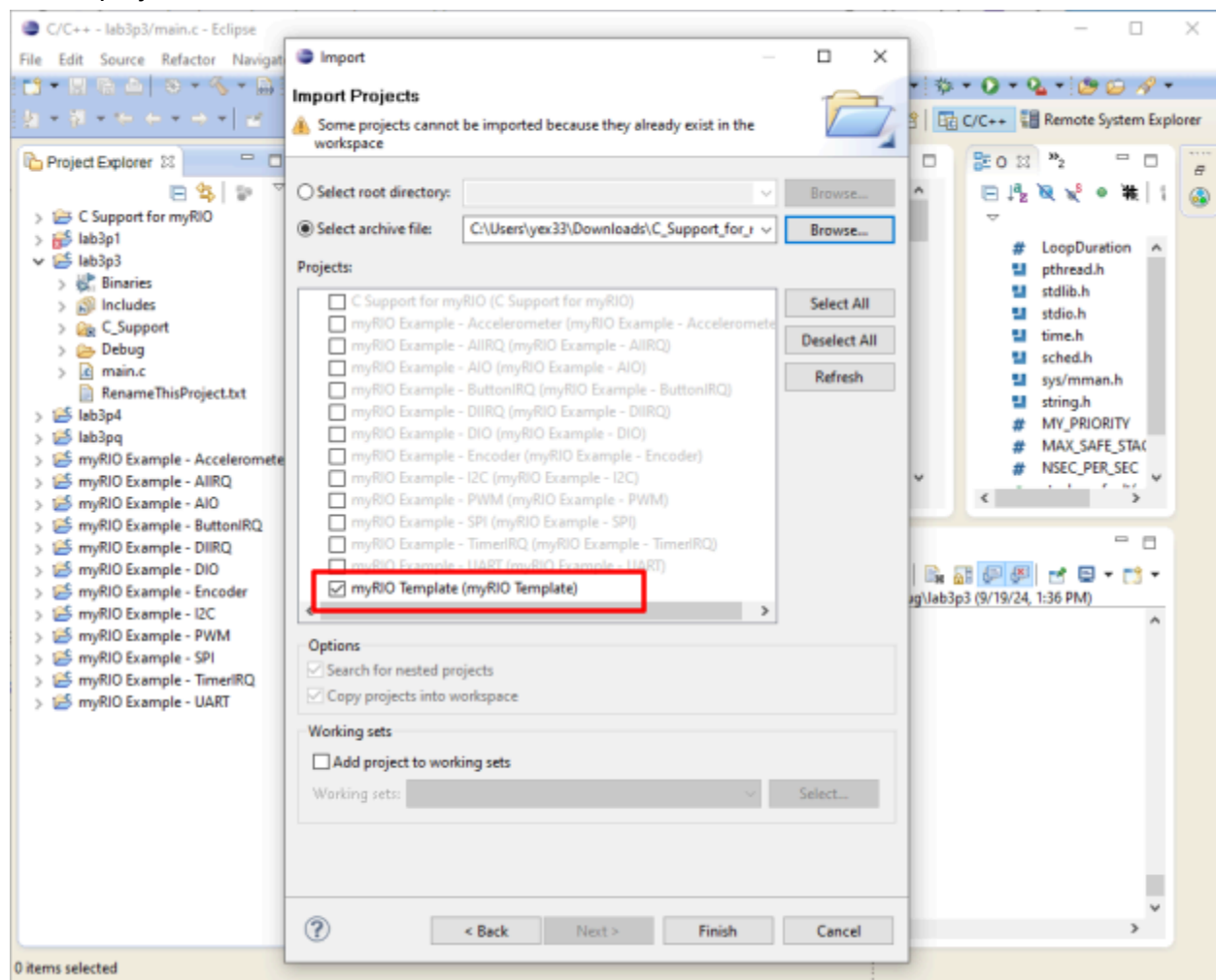
Relevant Context: after you rename the “myRIO Template” project to something else and need another “myRIO Template” project

There are two project archive files:

1. C_Support_for_myRIO1900_v6.0.zip: which contains 14 projects in it.
2. myRIO Template v6.0.zip: which contains only 1 project. This archive is located under `<workspace>\C Support for myRIO\template project\myRIO Template v6.0.zip`. And your `<workspace>` is by default `C:\Users\<your MacID>\workspace`

You can import an extra “myRIO Template” project by either:

1. Importing `C_Support_for_myRIO1900_v6.0.zip` again and single-select the project as indicated below, or



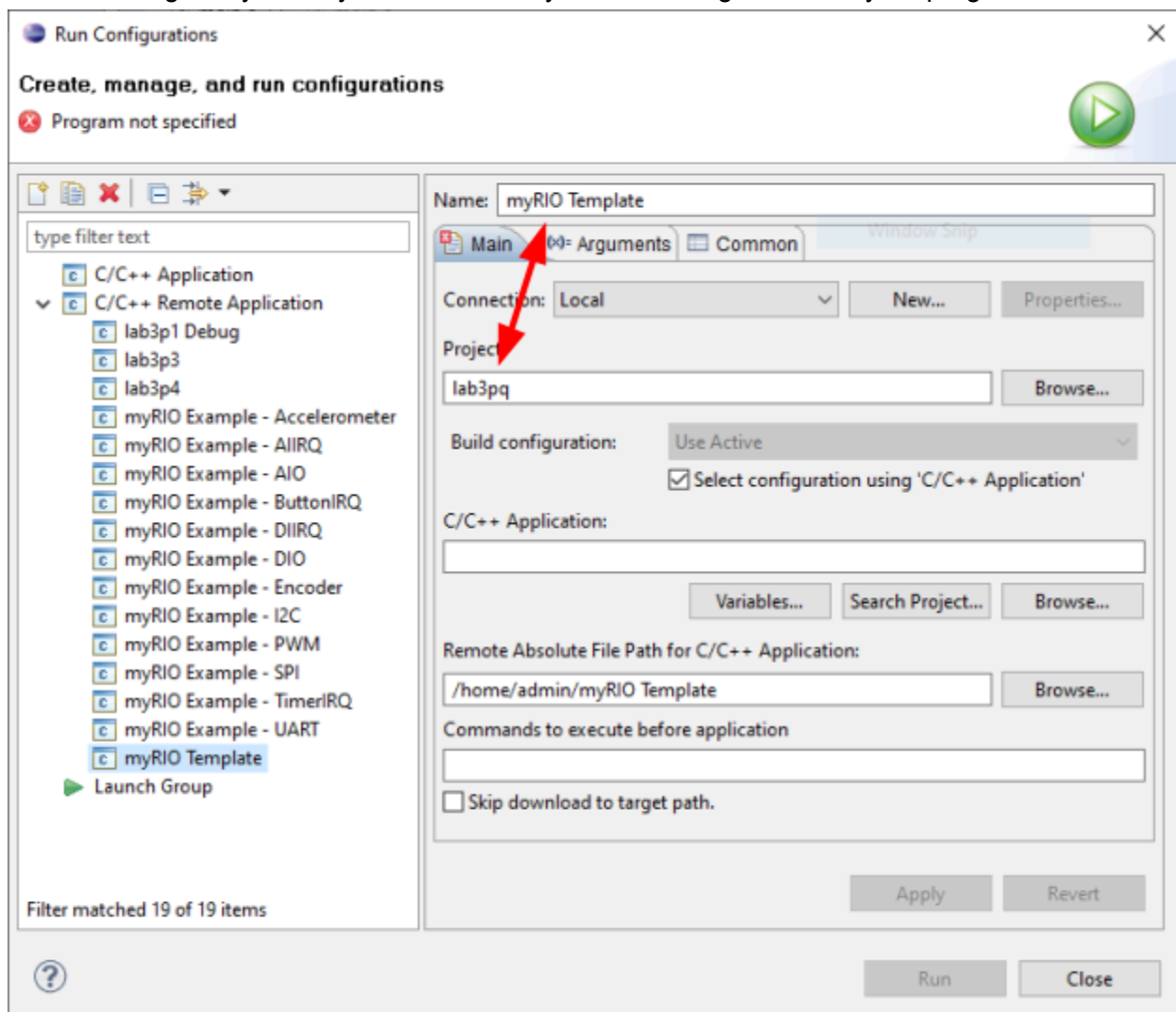
2. Find `myRIO Template v6.0.zip` and import the only project inside.

Good Housekeeping: Rename Both the Project and Run Configuration

Relevant Context: Part 2–Step 9, Part 3, Part 4

Say if you rename a project from “myRIO Template” to “lab3pq”, Eclipse does not refactor the name of the run configuration that comes with the project template. It is a good practice to

- Promptly **rename** the run configuration so that it is **consistent with the project name**;
- Then go on your way to further modify the run configuration for your program.

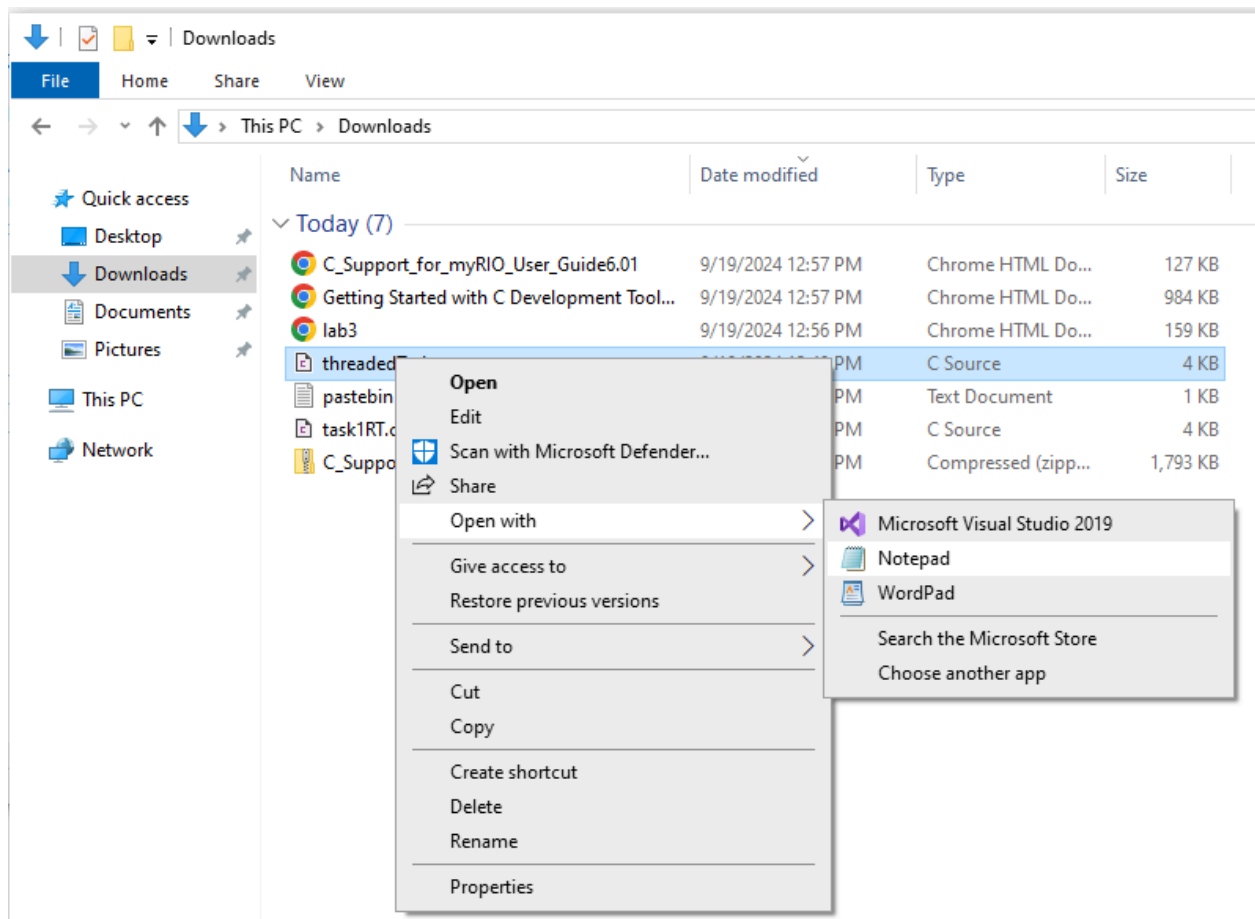


Opening Plain Text Files

Relevant Context: Part 3, Part 4

Good old Notepad for text files. You can also download and use a [portable notepad++](#) executable.

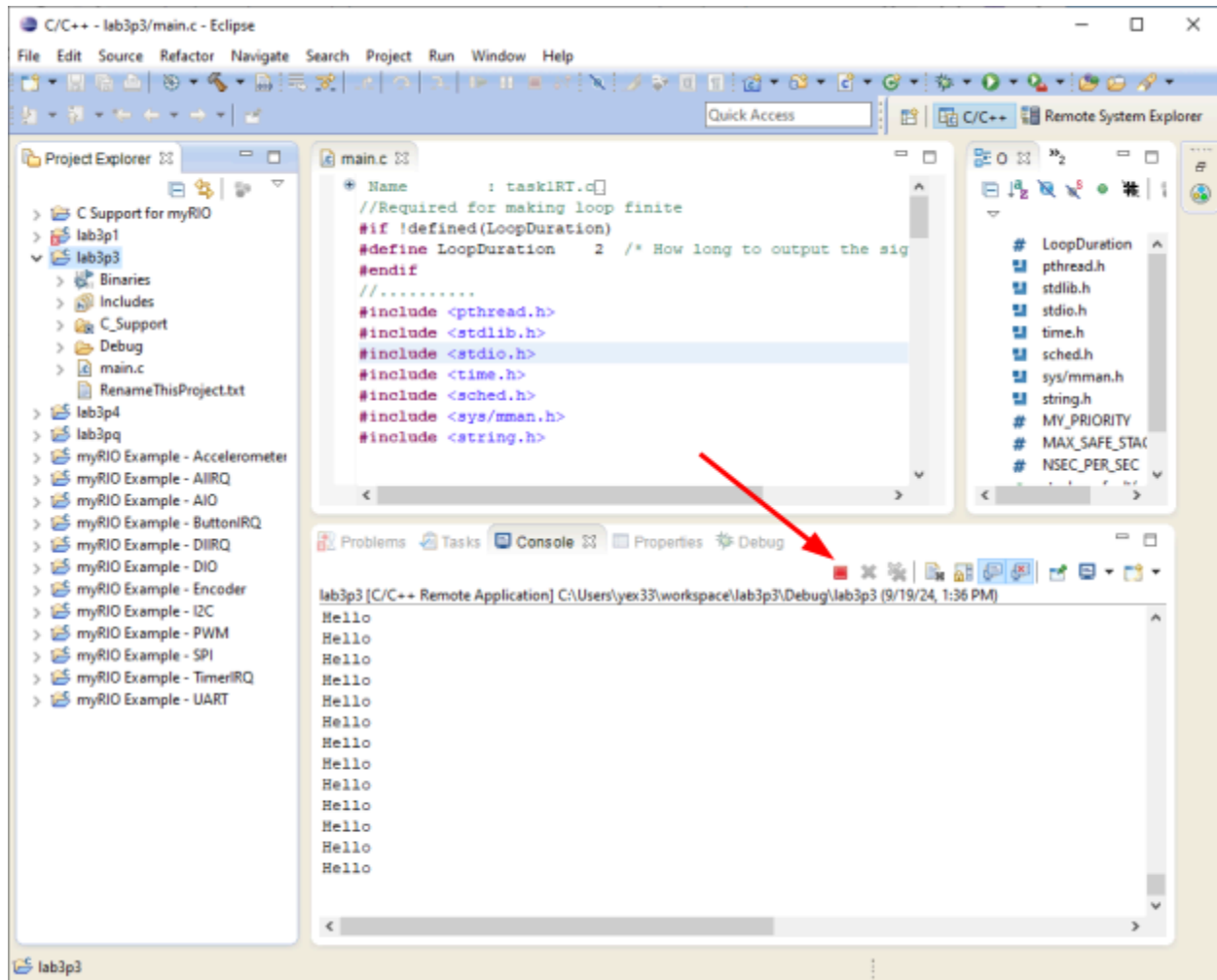
- Instead of double (left) clicking on the .c files, which would most likely bring up Visual Studio and a login prompt,
- you can right click on any text-based file and “open with” -> “Notepad”. You will need this to copy codes from task1RT.c and threadedTask.c to the main.c in your Eclipse project for Part 3 and 4.



myRIO Is Not Responding

Relevant Context: myRIO is stuck in an infinite loop, SSH connection failed, failed to “Run Configuration”, etc.

- First try interrupting the remote process using the button at the tail of the **red arrow**.



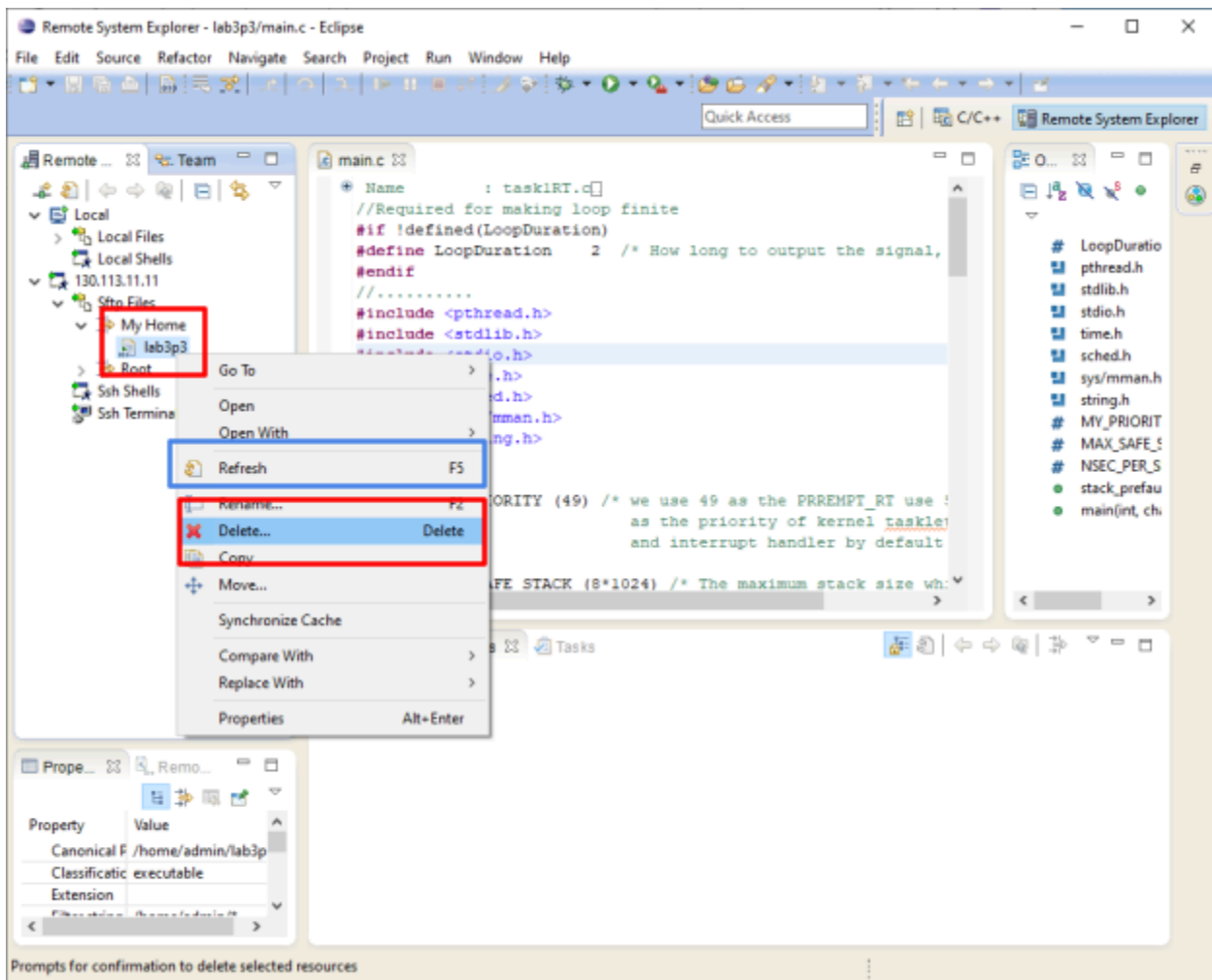
- If myRIO is still not responding, **physically unplug-and-plug** the power cable at the rear of the myRIO device. Give it a minute or two to reboot. Reconnect to the myRIO device by loosely following Part 1–Step 5.

Remote “IO Error”

Relevant Context: error in rare cases when running a remote run config

I don't have a screenshot of this exact error, but I've encountered it before.

- Simply right-click and **delete** each of the **binaries uploaded to myRIO**, usually under the “My Home” directory (as hinted in the **red box**). Then retry “Run Configuration”.
- You might need to “Refresh” a couple times for the binaries to show up.



- If that does not solve the issue, try hard rebooting myRIO by unplugging the power cable.